



ESG Annual Meeting

October 18, 2020



We've got this....

Agenda

Welcome

Priorities: Year in Review, Looking Ahead

Comfort

Belonging

Intentional Survival

Q & A

ZOOM 101 FOR DUMMIES!

Zoom Polls window showing a poll titled "Polling 2: Approval of Minutes". The poll question is "1. MOTION: We accept the Minutes of the 2019/20 Congregational Meeting." with radio button options for "Yes" and "No". A "Launch Polling" button is at the bottom.

Zoom Participants window showing two participants: "Jan Geissler (Me)" and "Patvocates (Host)". The "Raise Hand" icon is highlighted with a red box and a red arrow. The "Raise Hand" icon is also highlighted in the bottom toolbar.

Voting Privileges

MOTION: For the purpose of this meeting, everyone present, both members & adherents, have voting privileges.

Moved by Paul Colman

Seconded by Judie Thompson

Discussion.

Those in favour? Those opposed?

Minutes from Congregational Meetings

MOTION: We accept the Minutes of 2019/20 Congregational Meeting.

Moved by Jim Black

Seconded by Caren Cate

Discussion.

Those in favour? Those opposed?



BE THE CHURCH



OUR JOURNEY STARTED IN 2016

- A challenging and intentional 2-year process of reflection and renewal
- A strategic vision for growth
- Our Congregational Goals defined through the United Church's Ministry Articulation Profile (MAP):
 - Extravagant Welcome
 - Leadership
 - Growth

ESG's Near-Term Priorities

During the public health emergency our decisions are guided by three priorities

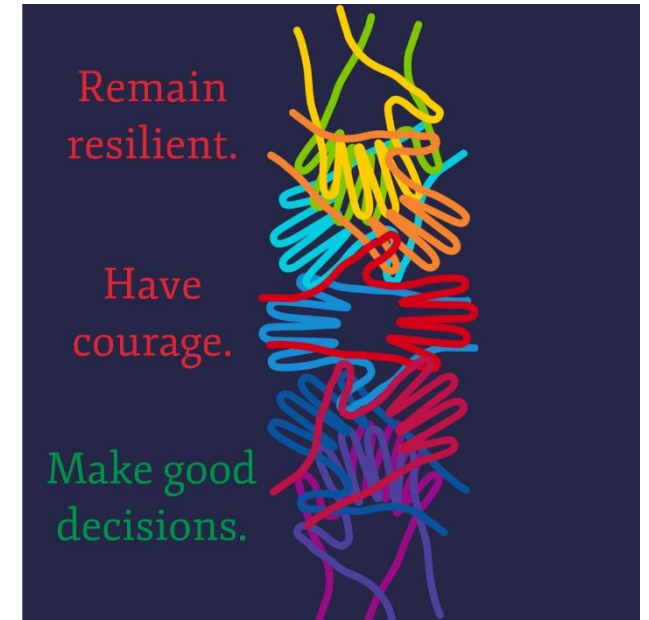
Comfort



Belonging



Intentional Survival



Comfort



Bring
comfort.

Be comfort.

Online Engagement



Bring
comfort.
Be comfort.

Easter & Thanksgiving **Worship** over 1,000 viewers

Regular Sunday Worship viewers 200/week

Children's Ministry Online averages 100/week

Thanksgiving had over 700 "hits"

Weekly Thursday email goes out to 565 email addresses
and engage with 265 readers/week

We Are Not Alone email averages over 1,000 openings
per week and almost 300 unique readers

"Accepting the darkness and the light in our lives" edition
resonated with folks, connecting with 2,400 people.



Online Engagement

(June to September)

Canada Helps – Online Giving:

2019 – 5 Donations Totalling \$1,000

2020 – 27 Donations Totalling \$25,000

PayPal (Facebook) 2020 – 6 Donations Totalling \$1,250

Love aLIVE

Oct. 25



United Church

Discover. Your way.



SKYLIGHT
FESTIVAL

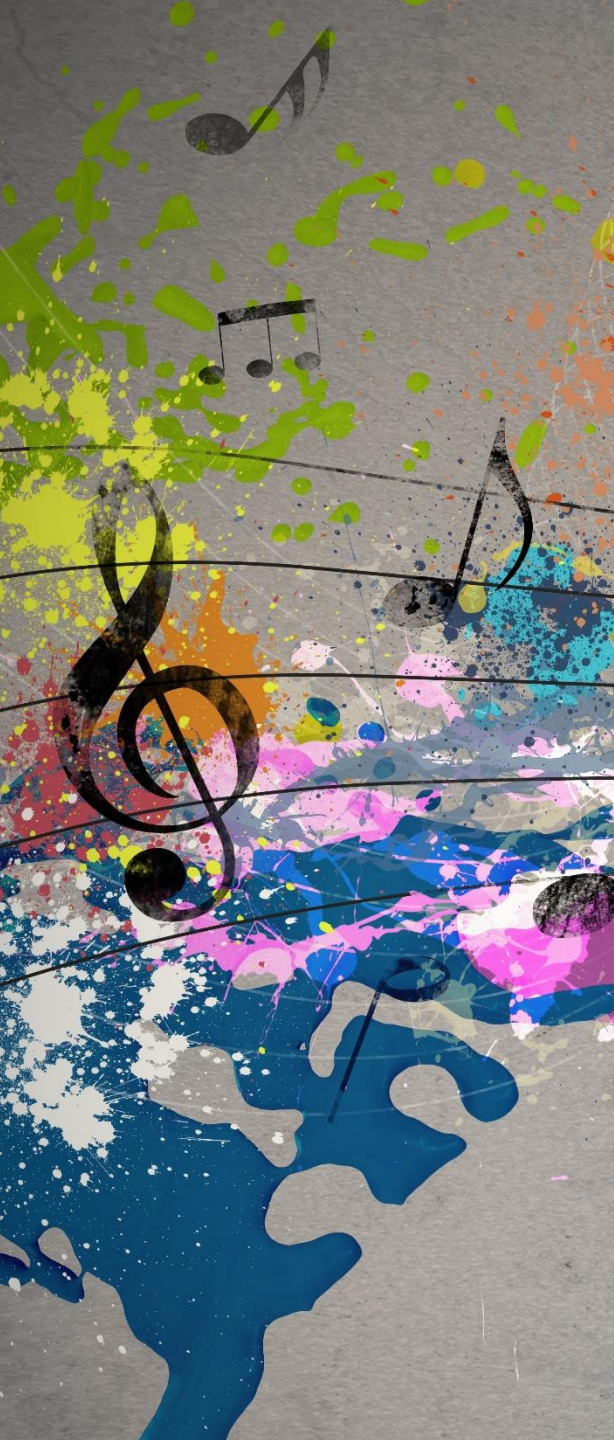




New Expressions – New for ESG

Third Sundays will feature new artists

- October 18 - Lyla Miklos, is a brilliant - Musical Theatre/Jazz Soloist
- November 15 - VOX Choir
- December 20 - A Celtic Christmas - with Tom Leighton and Anne Lederman
- We also plan to have a virtual Christmas Concert on December 13th. This will be an online event sharing some past archival performances.



Music Ministry

- Section Leads will continue to provide musical leadership at church services
- EIGHT people have joined the ESG choir during this time including new people from Yellowknife, Nova Scotia and a few other locations not in Toronto
- We had over 45 people on our zoom rehearsal last Thursday

Advent Planning

- At home candle-lighters
- Engagement kits
- Delivery connections
- Pre-recorded Advent & Christmas pieces



Belonging

Connection.
Community.



Belonging




The Upper Room:
Finding our Way Through
The Pandemic Together

Justice MATTERS

is a video series on social justice issues in Toronto, reported by workers on the frontlines. Clips can be downloaded for use in church services, meetings, etc., and on websites. See below.





We are connecting.
Things are happening.
We are not alone!

Belonging Nominating Report

Connection.
Community.

New Role - Church Community Engagement

- Champion culture of engagement – match interests and talents to relevant opportunities to engage, contribute and ‘belong’
- Promote lay ministry; strengthen ease with which we attract leaders
- Communicate to strengthen broad-based knowledge – many ways individuals and groups can contribute to life of ESG; share learning on how groups share and celebrate together; build community and sense of belonging.

2020/21 ESG Slate

Honorary Chair

- Doug McWhirter

Regional Reps

- Peter & Penny Wilkins, Donna Lang & Dan Lang

Standing Committees

- Worship, Sacraments, Music – Christine Lawson
- Outreach – Connie Roden
- Pastoral Care – Arlene Duncan
- Family – Rotating (Caren Cate – oversight)
- Adult Education – Patti Thompson
- Nominating – Donna MacCandlish
- Revenue – vacant*

Governing Council

- Chair – Susan Moore*
- Vice Chair – vacant*
- Secretary – Marilyn Blair*
- Trustees Chair - Hugh DesBrisay
- Property Chair – John Blevins
- Ministry & Personnel Chair - Heather Parker
- Finance Chair – Gord Thompson
- Treasurer – Charlie Roden
- M@L Outreach – Maggie Wilkinson
- M@L Family Ministry – Caren Cate
- M@L Worship, Sacraments, Music – Rob Crabtree
- M@L Pastoral Care – Kathleen Hull
- M@L Church Community Engagement – Donna MacCandlish

MOTION: New/Extended Appointments

- Peter Wilkins, Penny Wilkins, Dan Lang – Regional Representatives
- Donna MacCandlish, Member at Large, Church Community Engagement / Chair, Nominating Committee
- Kathleen Hull Member at Large – Member at Large, Pastoral Care
- John Blevins – Property Chair – Year 2 of a two-year term
- Heather Parker – Ministry & Personnel Chair – extended 1 year
- Marilyn Blair Secretary – extended till December 31, 2020
- Gordon Henderson – Member Ministry & Personnel
- Susan Moore – extended till June 30, 2021; Vice Chair in place January 2021

Moved by Ken Smee; Seconded by Rick Balmer

Those in favour? Those opposed?

Intentional Survival

Remain
resilient.

Have
courage.

Make good
decisions.



Project Flourish

Year in Review Achievements

Flourish House



Community Garden



ESG communications ladder

ESG Strategy

Gateway to Goodness

ESG Positioning

For people who want to enrich their lives and the lives of others, Eglinton St. George's United Church is the pathway to growth that 'does church differently.' It is the safe place to experience religion & spirituality that inspires people to be and do better.

ESG Promise

ESG fuels my growth.

**ESG
'WHY'**
We believe everybody has the power to make positive change.

Logo & Tagline



United Church

Discover. Your way.



United.org

Discover. Your way.

Love aLIVE

Oct. 25



United Church

Discover. Your way.



SKYLIGHT
FESTIVAL





Looking Forward

We are promoting existing and new programs to attract current and new people to ESG, discovering church in the way that suits them best:

- Revamp the **ESG Website** to launch the ESG strategy into the community
- Launch **Cultural Kitchen Parties** - a new initiative from New Perspectives
- Relaunch Dinner Church as **Love aLIVE** – 9 online dinner events
- Expand our young adult ministry through **Flourish House** connections
- Expand ESG's presence in the surrounding community through the **Community Garden**
- Build the ESG community through **paid media** and **social media**



United Church

Discover. Your way.

Thank you!

We are so thankful for your enthusiastic participation in the growth process!

Intentional Survival Financial Report

Remain
resilient.

Have
courage.

Make good
decisions.



Fiscal Year Results ending June 30, 2020

	2018/19 Actual	2019/20 Budget	2019/20 Actual
Revenue	\$917.5K	\$913.7K	\$882.6K
Interfund Transfer	\$65.4K(*)	\$81.4K	\$80.9K(**)
Expenses	\$976K	\$987.6K	\$930.1K
Net Surplus/(Deficit)	\$(12.5K)	\$(3.7K)	\$33.4K(***)
(*) Transferred \$37.5k to Property Maintenance Fund	(**) Transferred \$25K to Property Maintenance Fund	(***) Received \$34.7K from Canada Emergency Wage Subsidy	

Noteworthy Financial Changes

Donations up by \$20K from the previous year

Rental income decreased by (\$22.4K) due to COVID

Blyth is a major tenant

Hydro costs reduced by \$2K

Some costly but required expenses related to virtual services due to COVID

Generous Undesignated Bequests Received

We are grateful for generous bequests of \$20,000 from two donors.

Congregational Fund now at \$952K

	June 30 2019	June 30 2020
Leave a Lasting Legacy (LLL)	\$490K	\$509K
Property Maintenance	\$224K	\$253K
Loan receivable from Flourish	-	20K
Operating Reserve	\$132K	\$170K

ESG Funds: Values as of June 20, 2020

Congregational Fund: \$952K—Up 12%

Endowed Funds: \$924K—Down 3.2%

Restricted Funds: \$1,818K—Down 4.7%

Increase is due to generous bequests & input from operations.

Decreases due to disbursements & lower investment returns

Financial Priorities for 2020/21

- Secular trend impacting membership & revenue
- Planning challenge: importance of pledges and PAR
- Donation revenues stretch
- Importance of grants
- Focused quarterly review of 20/21 status
- Financially sustainable long term



Operating Budget for 2020/21

	2019/20 Budget	2019/20 Actual	2020/21 Budget
Revenue	\$913.7K	\$882.6K	\$780.2K(*) (*) No budget for Canada Emergency Wage Subsidy
Expenses	\$987.6K	\$930.1K	\$999.2K(**) (**) includes \$57.4k for sound system
Interfund Transfer	\$81.4K	\$80.9K	\$162.6K
Net Surplus/(Deficit)	\$(3.7K)	\$33.4K(***) (***) received \$34.7k Canada Emergency Wage Subsidy	(\$56.4K)

Approve 2020/21 Budget

MOTION: To approve the 2020/21 budget as presented.

Moved by Gord Thompson

Seconded by Charlie Roden

Those in favour? Those opposed?

Appointment of Auditor

MOTION: To appoint Kriens LaRose LLP
Company to conduct the July 1, 2020 to June 30,
2021 ESG audit

Moved by Gord Thompson

Seconded by Charlie Roden

Those in favour? Those opposed?



BE THE CHURCH



United Church

Discover. Your way.

Q&A



Adjourn the meeting

MOTION: to adjourn the meeting

Moved by John Blevins

Seconded by Bob Anglin

Discussion.

Those in favour?

Those opposed?